



#### 4 The Panorama Portarlington VIC

3  2  2 

What better place to live than in the heart of Portarlington. This immaculate 3-bedroom home is conveniently located close to the town centre, direct ferry to Docklands, and the beach, this home offers a relaxed, low-maintenance lifestyle in a fantastic location.

The master bedroom features a walk-in robe and a sleek ensuite, while bedrooms 2 and 3 come with built-in robes, providing ample storage. The modern kitchen is equipped with a 900mm Smeg oven and dishwasher, plus Caesar stone benchtops and walk in pantry. The open-plan dining and living area, complete with a split system for year-round comfort, flows effortlessly onto an alfresco with the addition of blinds for added privacy and comfort.

**Type** : House  
**Price** : \$850,000 - \$880,000  
**Land Size** : 399 sqm  
**View** : <https://www.huntersrealestate.com.au/sale/vic/geelong-district/portarlington/residential/house/8153733>



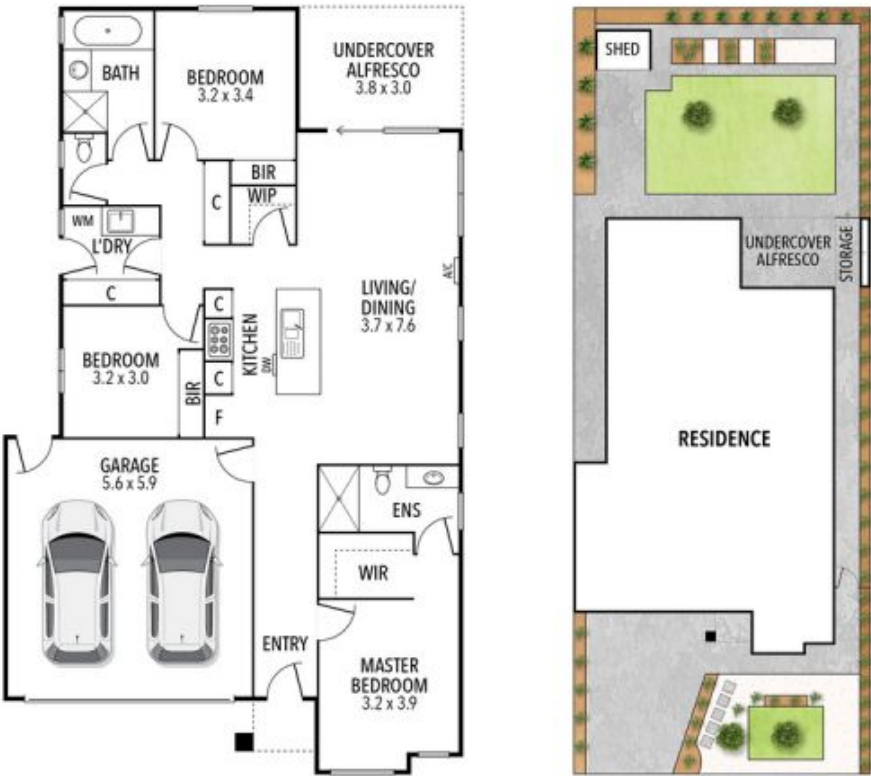
**Charlotte Hunter**  
5259 1103



**Oliver Mullan**  
5259 1103

[For full version visit the website](https://www.huntersrealestate.com.au)

# 4 The Panorama, Portarlington



THE ABOVE PLAN IS AN ARTIST'S IMPRESSION ONLY, IT INCLUDES ELEMENTS THAT ARE FOR DISPLAY PURPOSES ONLY AND MAY NOT BE TO SCALE. LANDSCAPING SHOWN IS INDICATIVE ONLY. DIMENSIONS ARE APPROXIMATE.